

RRE03S / RRE05S

Rhodiolife®

Rhodiolife® is Nektium's *Rhodiola rosea* extract from the pristine Siberian Altai region with significant adaptogenic activity, standardized to three different grades of rosavins and salidroside.

Traditionally, *Rhodiola* has been used extensively in Siberia to increase physical endurance, work productivity, longevity, resistance to high-altitude sickness, and to treat fatigue and depression.

Published research indicates protection of muscle mass, reduced fatigue and stress resistance.

Nektium studied Rhodiolife® in both in vitro and in vivo models, finding that Rhodiolife® provided significantly sustained increase in mental energy¹.



Product features

Botanical origin:

Rhodiola rosea (roots)

Cultivated or wild:

Wild-crafted in Altai region of Siberia

Cropping pattern:

Rotation of wild-harvesting areas

Appearance:

Fine powder

Packaging material:

5kg, 10kg, 25kg

Shelf Life:

3 years

Taste:

Astringent

Solubility:

RRE03S: Slightly soluble

RRE05S: Soluble

Recommended use:

700 mg/day

Safety & Quality:

GMO free, BSE/TSE free, allergen free, nanomaterial free, DNA-barcode

Product certification:

Kosher / Halal

Benefits

Cognitive Health

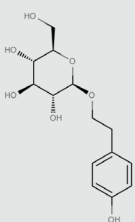
- + Provides sustained mental energy
- + May improve cognitive function
- + Enhances learning and memory

Sports & Energy

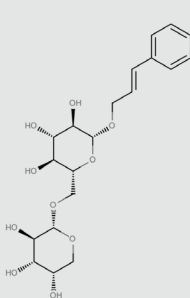
- + Adaptogenic
- + Reduces fatigue
- + Protects muscle cells
- + Antioxidant & anti-inflammatory

Bioactive markers

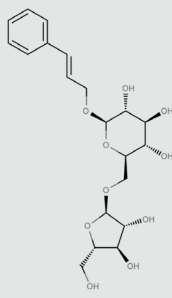
(1) salidroside



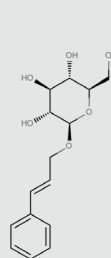
(2) rosarin



(3) rosavin



(4) rosin



Grades

RRE03S

Total rosavins ≥ 3%
Salidroside ≥ 1%

RRE05S

Total rosavins ≥ 5%
Salidroside ≥ 1.8%